

# The Romantic Disease: An Artistic Exploration of Tuberculosis

Anna Dumitriu

# Background

- Masters Degree in Fine Art, University of Brighton
- Visiting Research Fellow in the Global Health Research Centre at Brighton and Sussex Medical School
- Artist in Residence with Modernising Medical Microbiology at the University of Oxford
- Artist in Residence with the National Collection of Type Cultures at Public Health England (the oldest collection of pathogenic bacteria in the world)
- Visiting Research Fellow in Computer Science at the University of Hertfordshire





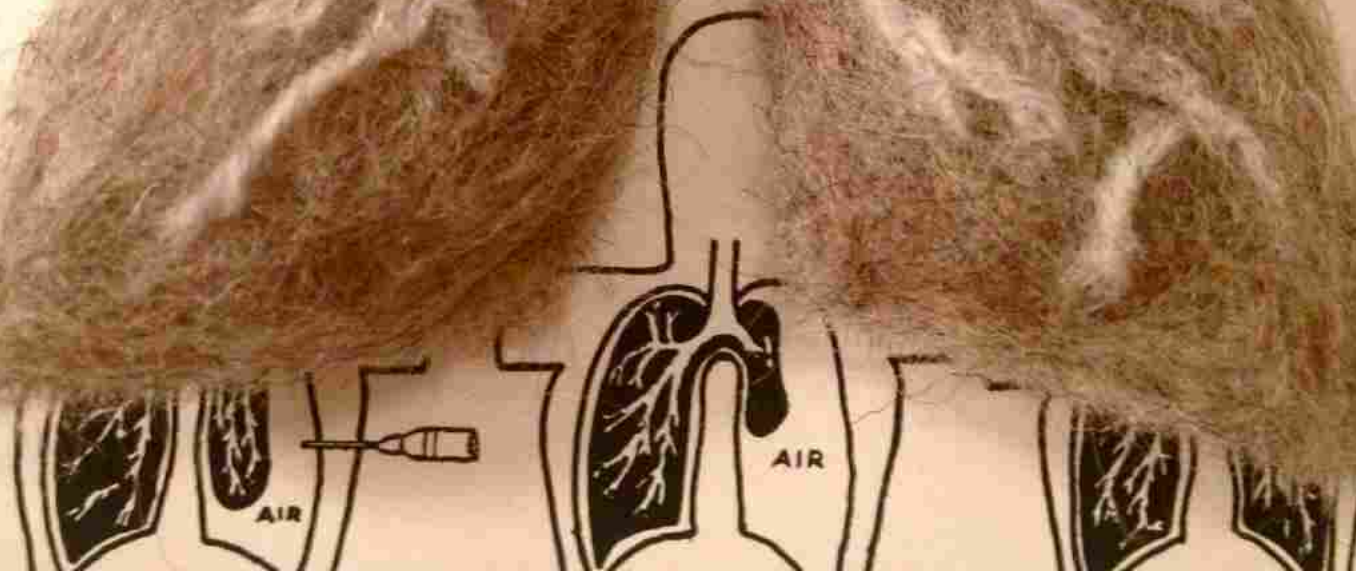
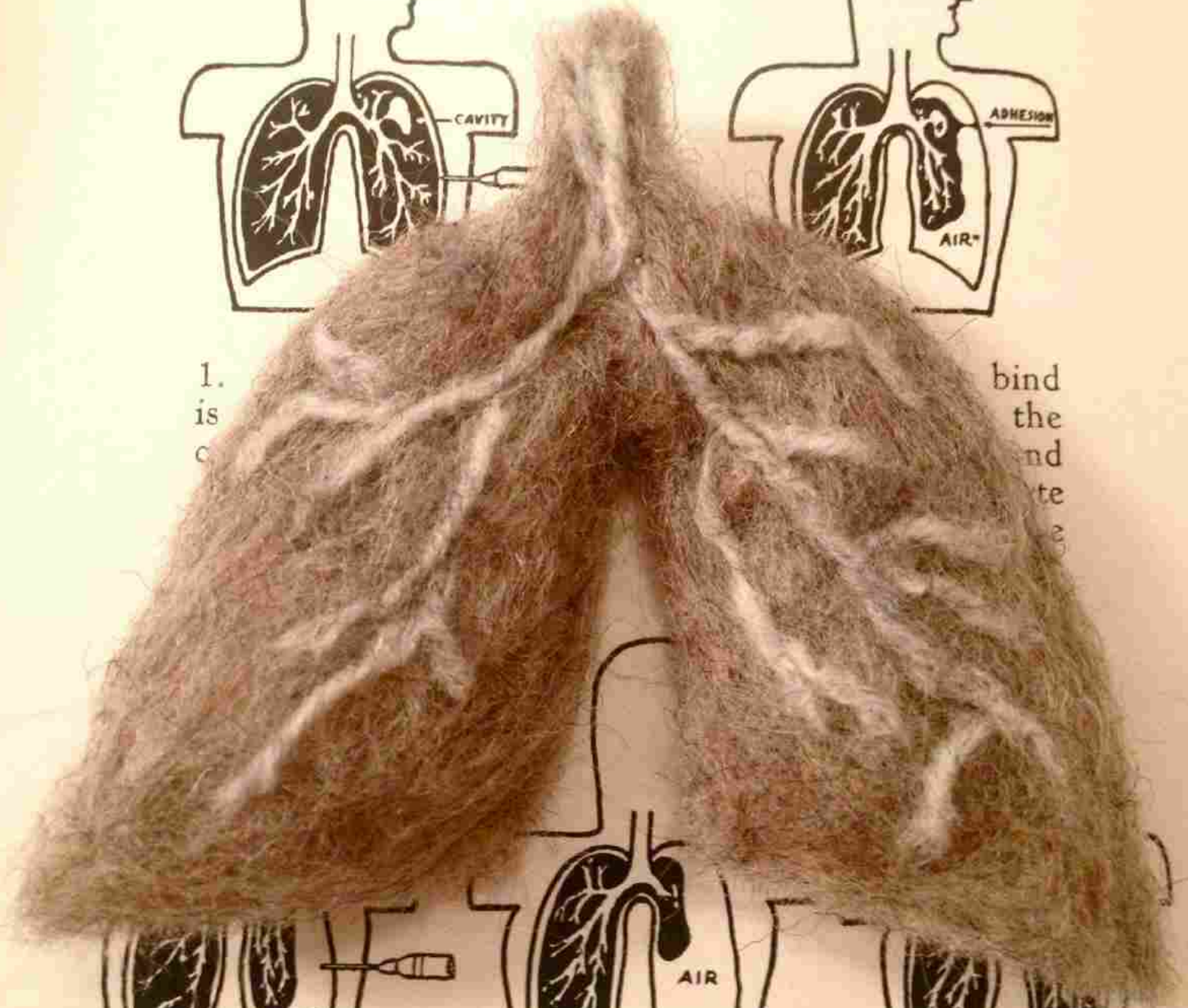






1.  
is  
c

bind  
the  
nd  
te  
e





























**HYPERSYMBIOTICS**  
 Dr D's New Biome Drops  
 Faecal transplant pills  
 "Cures anxiety, heals your gut  
 and helps you lose weight"  
 Not authorised for human consumption  
 Don't try this at home  
 Not FDA approved. "Trust me, I'm an artist"

**HYPERSYMBIOTICS™**  
 Genius Germ's Patent Creativity Pills  
 With extract of Tuberculosis DNA  
 Immediate relief from writer's or artist's block  
 Famous the world over  
 No known side effects  
 Not authorised for human consumption  
 Not FDA approved. "Trust me, I'm an artist"

**HYPERSYMBIOTICS**  
 CRISPR Miracle Cure  
 Part A: Make Do  
 Molecular scissors cut out deadly  
 antibiotic resistance from bacteria  
 Not allowed outside a registered laboratory  
 Dose: One per colony of bacteria  
 Not FDA approved. "Trust me, I'm an artist"





# Links

<http://www.annadumitriu.co.uk>

<http://theromanticdisease.tumblr.com>

<http://www.modmedmicro.co.uk>

E-mail: [annadumitriu@hotmail.com](mailto:annadumitriu@hotmail.com)

Facebook: [facebook.com/annadumitriu](https://www.facebook.com/annadumitriu)

Twitter [@annadumitriu](https://twitter.com/annadumitriu)

Instagram [@annadumitriuart](https://www.instagram.com/annadumitriuart)

With thanks for support from: The Wellcome Trust, Arts Council England, Modernising Medical Microbiology, University of Oxford, Brighton and Sussex Medical School, The National Collection of Type Cultures at Public Health England, The University of York, and The Picasso Museum Barcelona.